

The stickings shown (L & R) are there as a guide for right handed drummers. Left handed drummers should reverse the sticking patterns. **All exercises must be played to a metronome click.** Groups A–D should be played at the tempo shown for each exercise.

Single and double strokes in eighth notes, eighth-note triplets and 16th notes played alternately as a continuous exercise. To be played first time with singles and second with doubles. The tempo is ♩ = 80.

Single paradiddle in 16th notes using the whole kit (bass drum follows the right hand). The tempo is ♩ = 80.

Triple paradiddle in 16th notes using the whole kit (bass drum follows the right hand). The tempo is ♩ = 80.

R L R L R L R R L R L R L R L L R L R L R L R R L R L R L
 > > > > > > > >

Flam accent and single drag tap. The tempo is ♩ = 80.

Group D: Rolls

Five stroke roll phrase. The tempo is ♩ = 75.



Group E: Hands and Feet Patterns (sticking shown is optional)

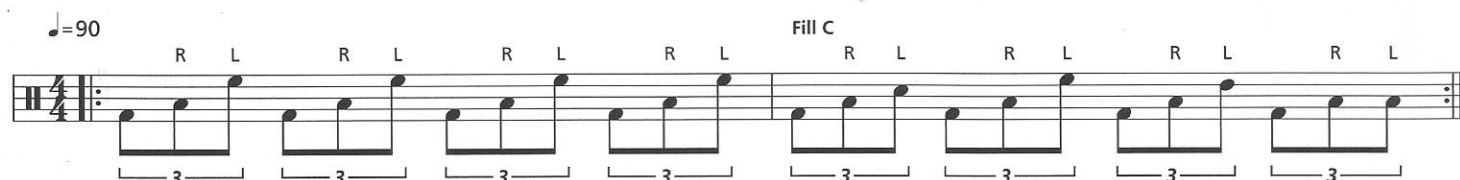
Pattern 1



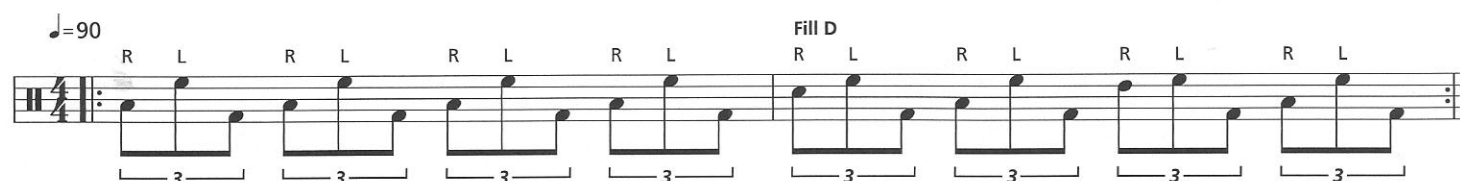
Pattern 2



Pattern 3

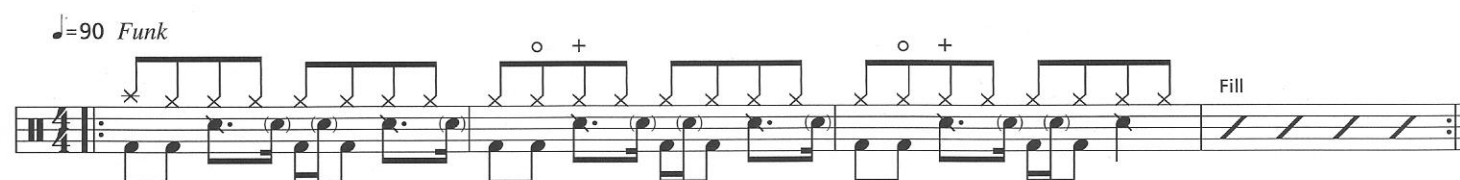


Pattern 4



Group F: Fill

In the exam you will be asked to play the three bar groove shown followed by the second bar of one of the hands and feet patterns (A-D) shown in Group D above chosen by the examiner. The snare is to be played with rim-shots and ghost notes. You will perform this exercise to the backing track on the CD with a repeat. The tempo is ♩ = 90.



Sight Reading

In this section you have a choice between either a sight reading test or an improvisation & interpretation test (see facing page). You will be asked to prepare a sight reading test which will be given to you by the examiner. The test is an eight bar groove using the whole kit. At this level there is an element of improvisation. This is in the form of a two bar development. The examiner will allow you 90 seconds to prepare it and will set the tempo for you. The tempo is ♩ = 80-120.

♩ = 85 *Rock*

[3]

Develop

[5]

[7]

Improvisation & Interpretation

You will be asked to play a written two bar groove, vary it in the following four bars and then improvise a two bar solo. The test will be played to a backing track using the bass drum, hi-hat (closed and open), snare drum, ride cymbal and crash cymbal. You have 30 seconds to prepare and then you will be allowed to practise during the first playing of the backing track, before playing it to the examiner on the second playing of the backing track. This test is continuous with a one bar count-in at the beginning and after the practice session. The tempo is ♩ = 80–120.

♩ = 100 *Funk*

1 2 3 4

Develop

Solo

The musical notation is on a single staff in 4/4 time. It begins with a repeat sign and a count-in of 1, 2, 3, 4. The first two bars contain a written groove: the first bar has a quarter note on the second line (G4) and a quarter note on the first line (F4); the second bar has a quarter note on the second line (G4) and a quarter note on the first line (F4). The next four bars are for development, each containing a different variation of the groove. The final two bars are for a solo, indicated by a double bar line and the word 'Solo' above the staff. The solo section consists of two bars of diagonal lines, indicating improvisation.

[5]



There are two ear tests in this grade. The examiner will play each test to you twice. You will find one example of each type of test printed below.

Test 1: Fill Playback and Recognition

The examiner will play you a one bar fill in common time played on the snare drum. You will play back the fill on the snare drum. You will then identify the fill from three printed examples shown to you by the examiner. You will hear the test twice.

Each time the test is played it is preceded by a one bar count in. There will be a short gap for you to practise. Next you will hear the vocal count in and you will then play the fill to the click. The tempo is ♩ = 70.

A

B

C

Test 2: Groove Recall

The examiner will play you a two-bar groove played on the bass drum, hi-hat (open and closed), crash cymbal, ride cymbal, bell of ride, cross stick, snare and toms. This is a two bar groove repeated. You will hear the test twice. You will be asked to play the groove back on the drum voices indicated for four bars then identify the style from three choices given to you by the examiner.

Each time the test is played it is preceded by a one bar vocal count-in. The tempo is ♩ = 80–120.

A: Latin

B: Jazz

C: Hip Hop

♩ = 110

Entering Rockschoool Exams

Entering a Rockschoool exam is easy. You may enter either online at www.rockschoool.co.uk or by downloading and filling in an exam entry form. Information on current exam fees can be obtained from Rockschoool either online or by calling +44 (0)845 460 4747.

- You should enter for your exam when you feel ready.
- You can enter for any one of three examination periods. These are shown below with their closing dates:

EXAMINATION PERIODS

PERIOD	DURATION	CLOSING DATE
Period A	1 st February to 31 st March	1 st December
Period B	1 st May to 31 st July	1 st April
Period C	23 rd October to 15 th December	1 st October

These dates apply from 1st September 2012 until further notice

- The full Rockschoool examination terms and conditions can be downloaded from our website. the information shown below is a summary.
- Please complete your entry giving the information required. Please fill in the type and level of exam, the instrument along with the examination period and year. Paper entry forms should be sent with a cheque or postal order (payable to Rockschoool Ltd) to the address shown on the entry form. Entry forms sent by post will be acknowledged either by letter or by email. All entries made online will automatically be acknowledged by email.
- Applications received after the expiry of the closing date, whether made by post or online, may be accepted subject to the payment of a late fee.
- Rockschoool will allocate your exam to a centre and you will receive notification if the exam showing a date, location and time as well as advice on what to bring to the centre. We endeavour to give you four weeks' notice of your exam date.
- You should inform Rockschoool of any cancellations or alterations to the schedule as soon as you can as it is usually not possible to transfer entries from one centre, or one period, to another without the payment of an additional fee.
- Please bring your music book and CD to the exam. You may use photocopied music if this helps you to avoid awkward page turns. The examiner will sign each book during each examination. You may be barred from taking an exam if you use someone else's music.
- You should aim to arrive for your exam 15 minutes before the time stated on the schedule. Guitarists and bass players should get ready to enter the exam room by taking their instrument from its case and tuning up. This will help with the smooth running of each exam day.
- Each Grade 5 exam is scheduled to last 25 minutes. You can use a small proportion of this time to set up and check the sound levels.
- You will receive a copy of the examiner's marksheet 2–3 weeks after the exam. If you have passed you will also receive a Rockschoool certificate of achievement.