

In this section, the examiner will ask you to play a selection of exercises drawn from each of the four groups shown below. Groups A and B contain examples of the kinds of scales and chords you can use when playing the pieces. In Group D you will be asked to prepare the riff exercise and play it to the CD backing track. You do not need to memorise the exercises (and can use the book in the exam) but the examiner will be looking for the following: a prompt and accurate response, fluency and consistency of pulse.

Groups A, B and C should be played at  $\text{♩} = 100$ . Group D should be played at  $\text{♩} = 135$ . The examiner will give you this tempo in the exam. All scales and chords should be played using the piano patch.

Candidates can choose to play groups A, B and C as follows:

- either Group A: C, D $\flat$ (C $\sharp$ ), D and Groups B & C: E $\flat$ , E, F
- or Group A: E $\flat$ , E, F and Groups B & C: C, D $\flat$ (C $\sharp$ ), D

## Group A: Scales $\text{♩} = 100$

All scales are to be prepared hands separately *and* together.

1. Blues scale. C blues scale shown.

2. Natural minor scale. C natural minor scale shown.

3. Major scale. C major scale shown.

4. Mixolydian mode. C mixolydian mode shown.

**Group B: Chords** ♩ = 100

You must prepare the following minor chord progressions with both right and left hands separately. The examiner will select two consecutive chord progressions for you to play: e.g. 1 & 2 or 2 & 3.

1.



2.



3.



You must prepare the following major chord progressions with both right and left hands separately. The examiner will select two consecutive chord progressions for you to play: e.g. 1 & 2 or 2 & 3.

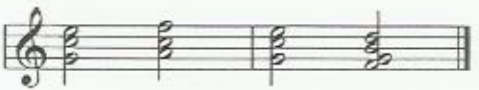
1.



2.



3.



**Group C: Minor Sevenths** ♩=100

Minor sevenths. C minor<sup>7</sup> example shown.

Musical notation for Group C: Minor Sevenths. It shows a 4-measure piano piece in C minor, 4/4 time, with a tempo of 100. The bass line consists of a steady eighth-note pattern: C3, B2, A2, G2. The treble line features chords: Cm7, Cm7, Cm7, Cm7.

**Group D: Riff** ♩=135

In the exam you will be asked to play the following riff to the backing track on the CD. The riff shown in bar 1 should be played in the same shape in the bars 2-8. The root note of the pattern to be played is shown in the music in each bar where the chord changes. Where only one bar is shown play only the first bar of the riff.

*Funk*

Patch: Electric Piano

Musical notation for Group D: Riff. It shows a 4-measure piano piece in C minor, 4/4 time, with a tempo of 135. The bass line consists of a steady eighth-note pattern: C3, B2, A2, G2. The treble line features chords: Cm7, Cm7, Dm7, Dm7.

Musical notation for Group D: Riff. It shows a 4-measure piano piece in C minor, 4/4 time, with a tempo of 135. The bass line consists of a steady eighth-note pattern: C3, B2, A2, G2. The treble line features chords: Fm7, Em7, Ebm7, Dm7.

# Sight Reading

In this section you have a choice between **either** a sight reading test **or** an improvisation & interpretation test (see facing page). Printed below is the type of sight reading test you are likely to encounter in the exam. At this level there is an element of improvisation. This is in the form of a two bar ending. The improvised ending should use patterns used in the sight reading part of the test. You will be asked to perform it using either the piano or electric piano patch on your keyboard. The sight reading test will be in either the D minor pentatonic or E minor pentatonic scales. The examiner will allow you 90 seconds to prepare it and will set the tempo for you on a metronome.

**Tempo** ♩ = 60

*Funk*

Patch: Electric Piano

Dm Gm

Dm Am

Gm Dm

# Improvisation & Interpretation

Printed below is an example of the type of improvisation & interpretation test you are likely to encounter in the exam. At this level there is an element of sight reading. This takes the form of a two bar rhythm at the beginning of the test. You will be asked to play the chords in the given rhythm and continue an improvised line using chords where indicated by the chord chart and using either the organ or electric piano patch on your keyboard. Note that an element of left hand work is expected at this grade. You will be allowed 30 seconds to prepare. You will be allowed to practise through one playing of the test on the CD before playing it a second time for the exam. This test is continuous with a one bar count in at the beginning and after the practice session. The key will be either C major or F major and will use chords I, ii<sup>7</sup>, IV, V and vi.

**Tempo** ♩ = 70

**Rhythm**



**Chord Sequence**

*Pop*

Patch: Electric Piano

C	Am	F	C
C	Am	Dm <sup>7</sup>	G

There are two ear tests in this grade. The examiner will play each test to you twice on CD. You will find one example of each type of test you will be given in the exam printed below.

## Test 1: Melodic Recall

You will be asked to play back using the piano or electric piano patch on your keyboard a four bar melody composed from either the D major or E major scales. You will be given the tonic note and told the starting note and you will hear the test twice with a drum backing. There will then be a short break for you to practise the test and then the test will recommence and you will be required to play the melody with the drum backing using the patch indicated on the CD. This test is continuous.

Tempo ♩ = 90



## Test 2: Chord and Rhythm Recall

You will be asked to play back using either the piano or electric piano patch on your keyboard a four bar rhythmic chord progression. You will be told the tonic chord, the 1st chord and chord inversion and you will hear the rhythmic chord progression made up of chords I, ii<sup>7</sup>, IV and V<sup>7</sup> in the key of either D major or E major played twice with a drum backing. There will then be a short break for you to practise and then the test will recommence and you will be required to play the rhythmic chord progression to the drum backing using the patch indicated on the CD. This test is continuous.

Tempo ♩ = 90



# General Musicianship Questions

---

You will be asked five General Musicianship Questions at the end of the exam. The examiner will ask questions based on pieces you have played in the exam. Some of the theoretical topics can be found in the Technical Exercises.

## Topics:

- i) Music theory
- ii) Knowledge of your instrument

The music theory questions will cover the recognition of the following at this grade:

Note pitches	Dynamic markings ( <i>p</i> , <i>mp</i> , <i>mf</i> , <i>f</i> and <i>ff</i> )
Note values	Repeat markings
Rests	Accents and staccato
Time Signatures	Cresc. and dim.
Key Signatures	D.S. and D.C. al Coda
Glissando	Spread chords

Knowledge of the construction of the following chord types:

Major	Dominant <sup>7</sup>
Minor	Minor <sup>7</sup>

The instrument knowledge questions will cover the following topics at this grade:

How to select and store patches and stylistic reasons for choice  
Stylistic techniques associated with chosen patches

Knowledge of parts of the keyboard:

Keys, on/off switch, volume control, pitch shifter, patches.

Knowledge of main keyboard makes.

Questions on all these topics will be based on pieces played by you in the exam. Tips on how to approach this part of the exam can be found in the Rockscool Companion Guide and on the Rockscool website: [www.rockscool.co.uk](http://www.rockscool.co.uk).